

15.8m Fast Patrol Boat



PRINCIPAL PARTICULARS

Length Overall:	15.8m
Beam Moulded:	4.06m
Depth Moulded:	2.03m
Design Draft:	0.82m
Construction:	Marine Grade Aluminium
Structural Warranty:	12 Months

REGULATORY

Class:	LR
Flag:	Indonesia
Notation:	✠ 100A1 SSC, Patrol Mono, HSC, G3 [✠] LMC
Designer:	Southerly Designs

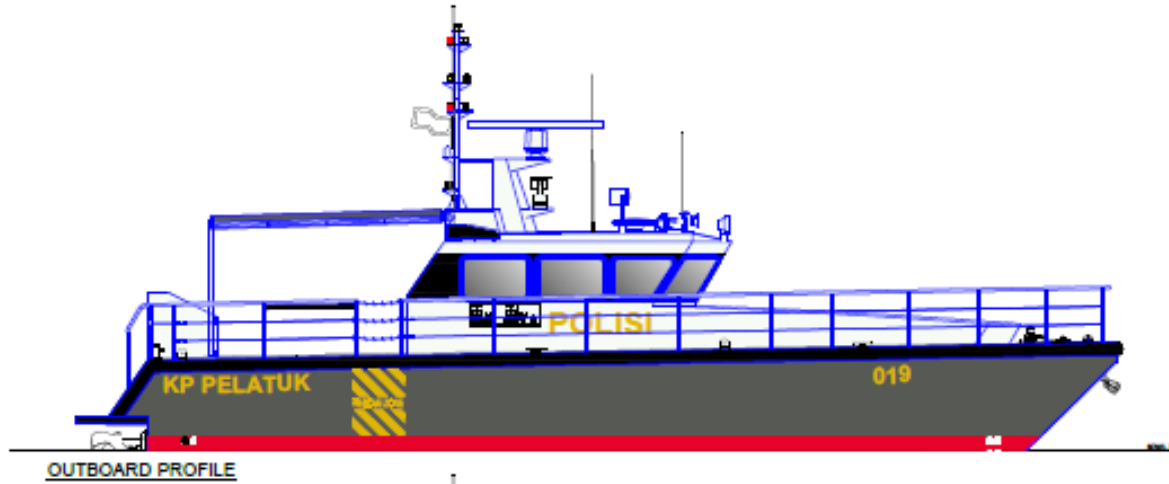
CAPACITIES

Fuel:	4,000 L
Cabins/Berths:	4
Main Engines:	2 x MTU S60 (551kW @2,300rpm)
Propulsion:	2 x Hamilton Water Jets
Speed:	30.0 knots

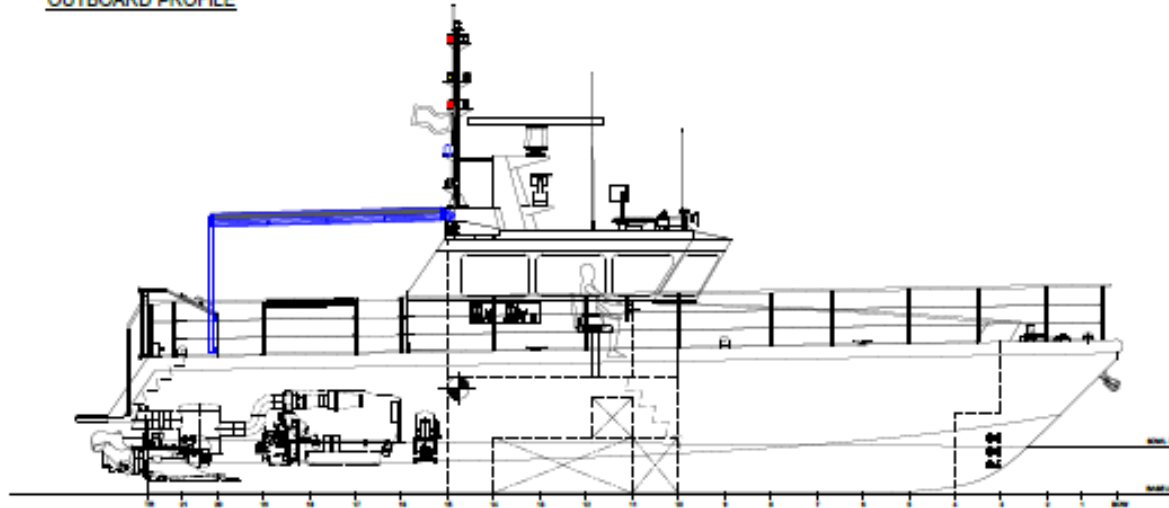


Fast Patrol Boat

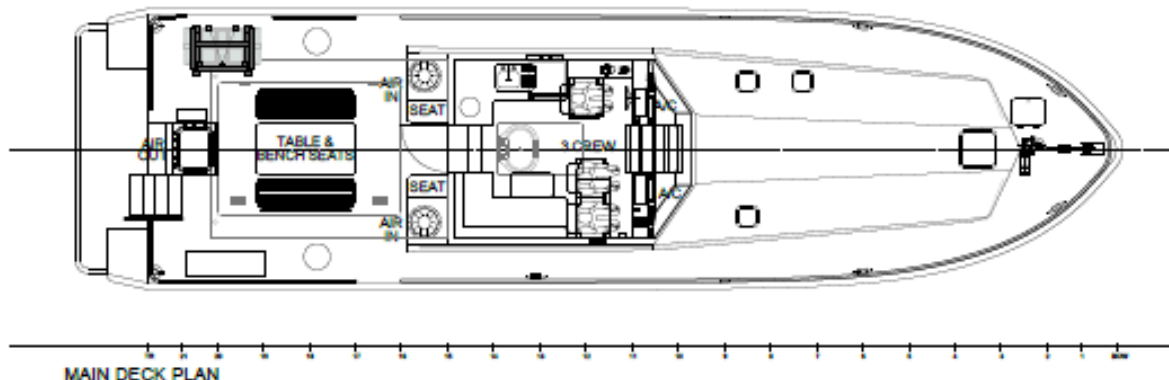
15.8m Fast Patrol Boat



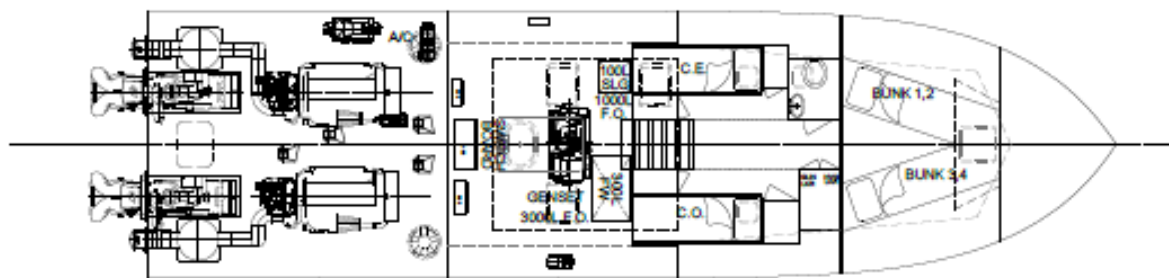
OUTBOARD PROFILE



INBOARD PROFILE



MAIN DECK PLAN



BELOW DECK PLAN



Fast Patrol Boat

Strategic Marine Group | Office: +65 6932 9905
sales@strategicmarine.com | www.strategicmarine.com