

# 42m Gen 4 Fast Crew Boat



**PRINCIPAL PARTICULARS**

Length Overall:	42.0m
Length Waterline:	42.0m
Scantling Draft:	1.90m
Propeller Draft:	2.10m
Deck Strength:	2.5 t/m <sup>2</sup>
Construction:	Marine Grade Aluminium
Structural Warranty:	24 Months (2 Years)

**REGULATORY**

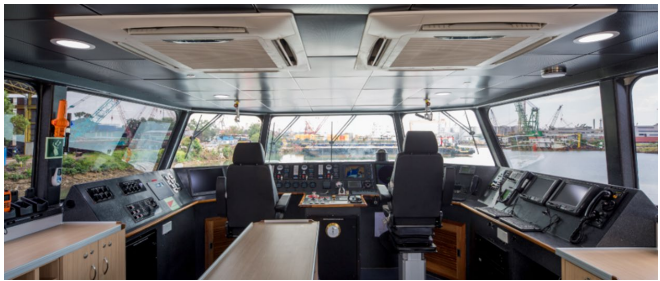
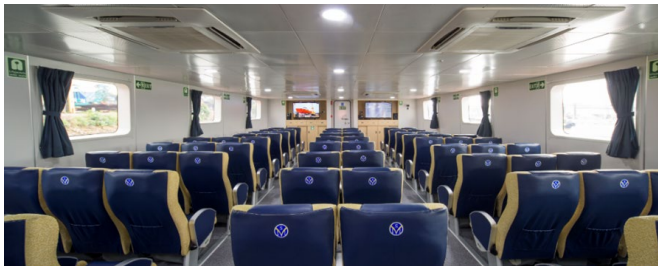
Class:	Lloyds Register/IACS
Flag:	TBA
GRT:	317 (Approx.)
Designer:	Southerly Designs

**CAPACITIES**

Fuel:	84,220 L
Fresh Water:	33,000 L
Black Water:	500 L
Crew:	12
Passengers:	Up to 100
Cabins:	5 x Two Berths + 2 x Single Berths + 1 medical/office
Max Deadweight:	190 Tonnes
Clear Deck Area:	140.0m <sup>2</sup> (115.0m <sup>2</sup> with Crane & Gangway)
Auxiliary:	2 x Cummins 6BT or Similar

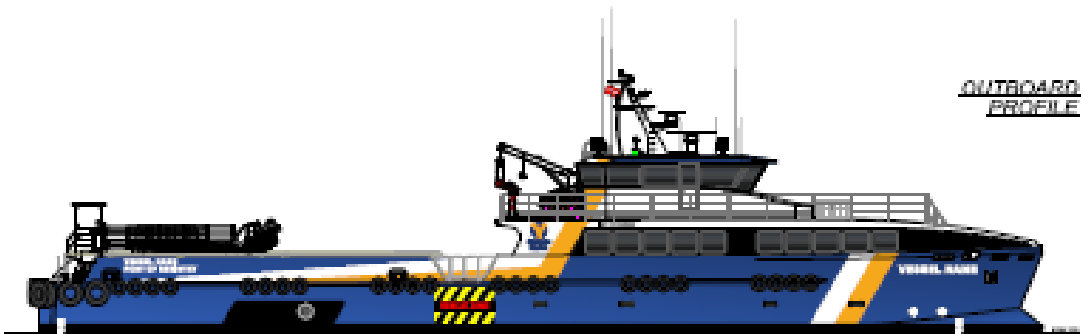
**FEATURED OPTIONS**

Gangway:	Safe Transfer of Passengers (Motion Compensated)
GYRO:	Vessel Stabilizing System
½ Fifi:	600/1200 m <sup>3</sup> /hr
Bow Thruster:	1 or 2 Electrical with 1 Tonne of Thrust (Approx.)
Deck Crane:	Palfinger or Similar
Ride Control:	Naiad Active Interceptor or Similar
Biosafe Notation:	Infectious Disease Control
Green passport:	Safe Ship Recycling
IMO Tier III:	SCR System
Semi Autonomous:	Sea Machine or Similar
DP1:	Dynamic Positioning

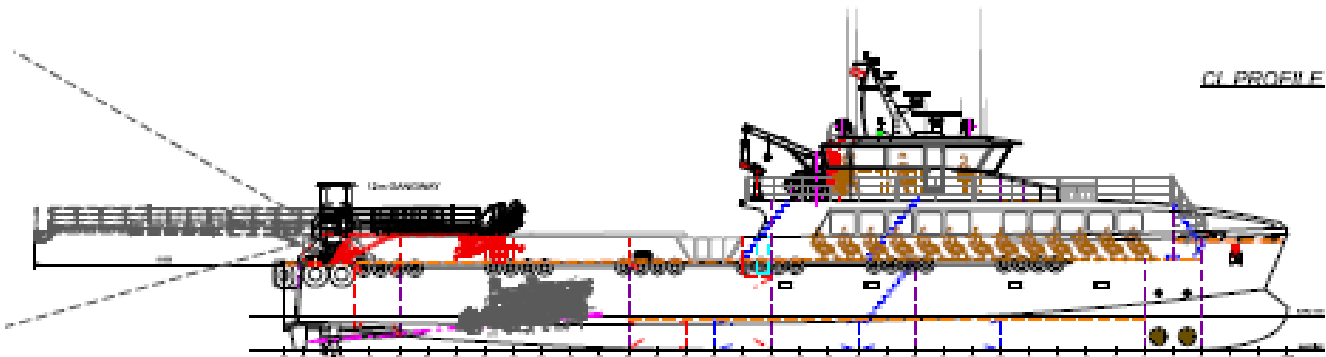


Fast Crew Boat

# 42m Gen 4 Fast Crew Boat

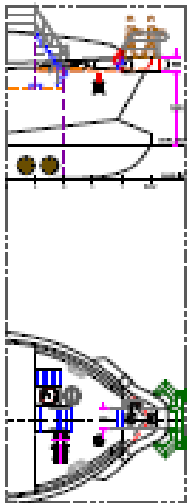


OUTBOARD  
PROFILE



CL PROFILE

BOW BOARDING  
OPTION



BRIDGE DECK PLAN



MAIN DECK PLAN

## PROPULSION SYSTEM – OPTION 1

Main Engines:	3 x Cummins KTA50-M2	3 x 1342 kW (1800bhp) @ 1900 RPM (HD Rating)
Propulsion:	3 x Fixed Pitch Propellers	FPP
Speed @85%:	30.0 Knots (30DWT)	Fuel Consumption (No Gen) 905 l/hr @ 85% MCR
Speed @100%:	31.5 Knots (30DWT)	Fuel Consumption (No Gen) 999 l/hr @ 100% MCR

## PROPULSION SYSTEM – OPTION 2

Main Engines:	3 x CATERPILLAR C32	3 x 1081 kW (1450bhp) @ 2300 RPM (C Rating)
Propulsion:	3 x Fixed Pitch Propellers	FPP
Speed @85%:	28.0 Knots (30DWT)	Fuel Consumption (No Gen) 728 l/hr @ 85% MCR
Speed @100%:	30.0 Knots (30DWT)	Fuel Consumption (No Gen) 872 l/hr @ 100% MCR

## PROPULSION SYSTEM – OPTION 3

Main Engines:	3 x YANMAR 12AYM-WET	3 x 1140 kW (1550bhp) @ 1900 RPM (H Rating)
Propulsion:	3 x Fixed Pitch Propellers	FPP
Speed @85%:	28.5 Knots (30DWT)	Fuel Consumption (No Gen) 735 l/hr @ 85% MCR
Speed @100%:	30.0 Knots (30DWT)	Fuel Consumption (No Gen) 870 l/hr @ 100% MCR

Fast Crew Boat

Strategic Marine Group | Office: +65 6932 9905  
sales@strategicmarine.com | [www.strategicmarine.com](http://www.strategicmarine.com)