

40M GEN 3 FAST CREW BOAT



PRINCIPAL PARTICULARS

Length Overall:	40.4m
Length Waterline:	39.0m
Scantling Draft:	1.70m
Propeller Draft:	1.90m
Deck Strength:	2.0 t/m ²
Construction:	Marine Grade Aluminium
Structural Warranty:	24 Months (2 Years)

REGULATORY

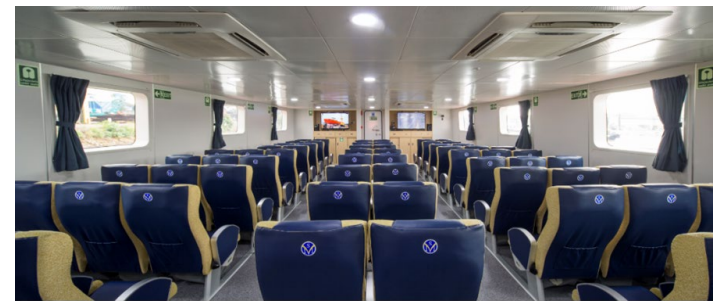
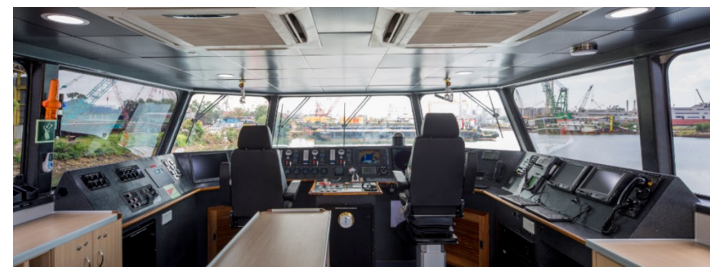
Class:	Lloyds Register/IACS
Flag:	Malaysia/Owners Choice
GRT:	288 (Approx.)
Designer:	Southerly Designs

CAPACITIES

Fuel:	70,000 L
Fresh Water:	30,000 L
Black Water:	500 L
Crew:	12
Passengers:	Up to 100
Cabins:	5 x Two Berths + 2 x Single Berths + 1 medical/office
Max Deadweight:	105 Tonnes
Clear Deck Area:	120.0m ²
Auxiliary:	2 x Cummins 6BT or Similar

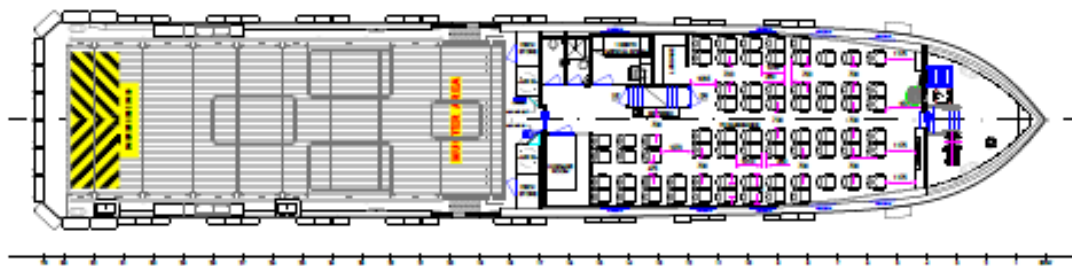
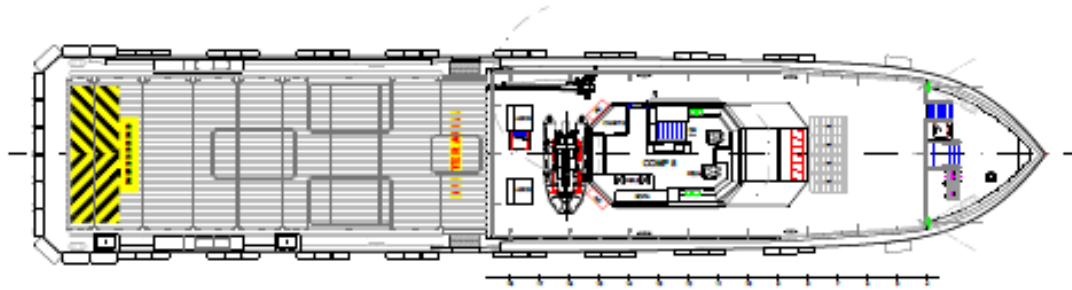
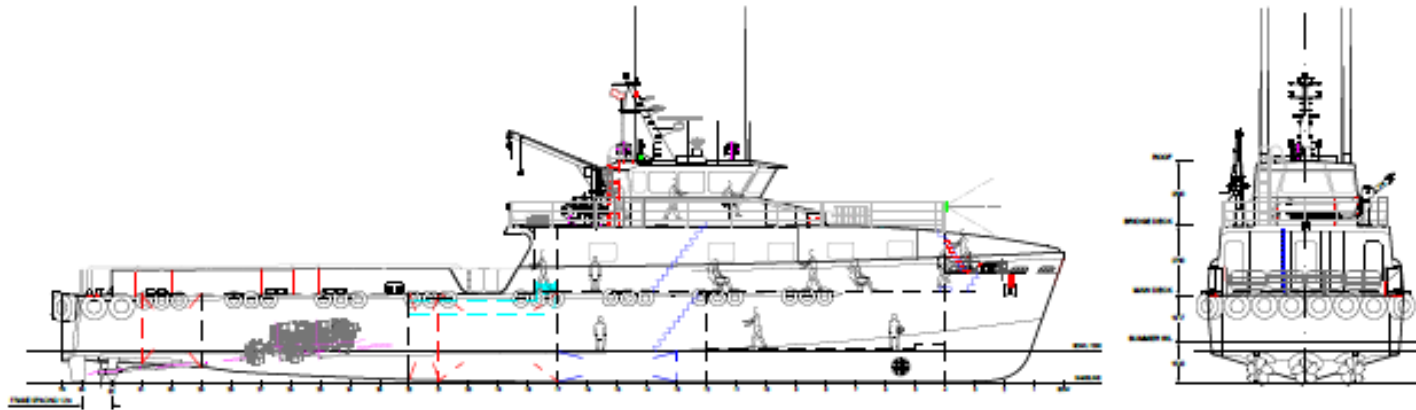
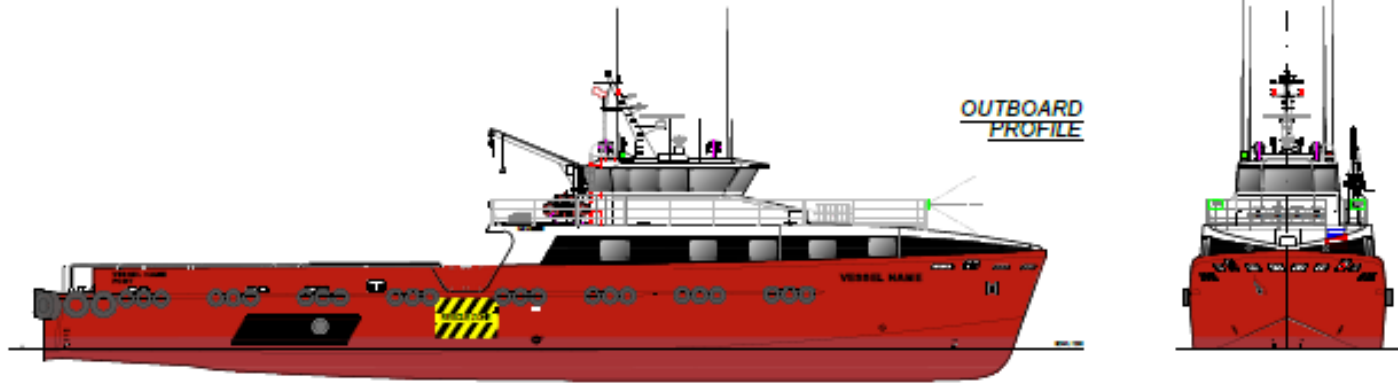
FEATURED OPTIONS

½ Fifi:	600/1200 m ³ /hr
Deluge System	Aft Deck/Superstructure
Ballistic Protection	Bridge Sides
Bow Thruster:	1 or 2 Hydraulic with 1 Tonne of Thrust (Approx.)
Deck Crane:	Palfinger or Similar
Ride Control:	Naiad Active Interceptor or Similar
Biosafe Notation:	Infectious Disease Control
Green passport:	Safe Ship Recycling
IMO Tier III:	SCR System
Semi Autonomous:	Sea Machine or Similar
DP1:	Dynamic Positioning



Fast Crew Boat

40M GEN 3 FAST CREW BOAT



PROPULSION SYSTEM – OPTION 1

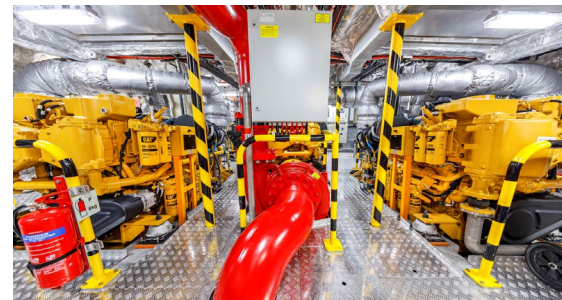
Main Engines:	3 x Cummins KTA50-M2
Propulsion:	3 x Fixed Pitch Propellers
Speed @85%:	29.5 Knots (30DWT)
Speed @100%:	31.0 Knots (30DWT)

PROPULSION SYSTEM – OPTION 3

Main Engines:	3 x YANMAR 12AYM-WET
Propulsion:	3 x Fixed Pitch Propellers
Speed @85%:	28.0 Knots (30DWT)
Speed @100%:	29.5 Knots (30DWT)

PROPULSION SYSTEM – OPTION 2

Main Engines:	3 x CATERPILLAR C32
Propulsion:	3 x Fixed Pitch Propellers
Speed @85%:	28.0 Knots (30DWT)
Speed @100%:	29.0 Knots (30DWT)



Fast Crew Boat

Strategic Marine Group | Office: +65 6932 9905
sales@strategicmarine.com | www.strategicmarine.com