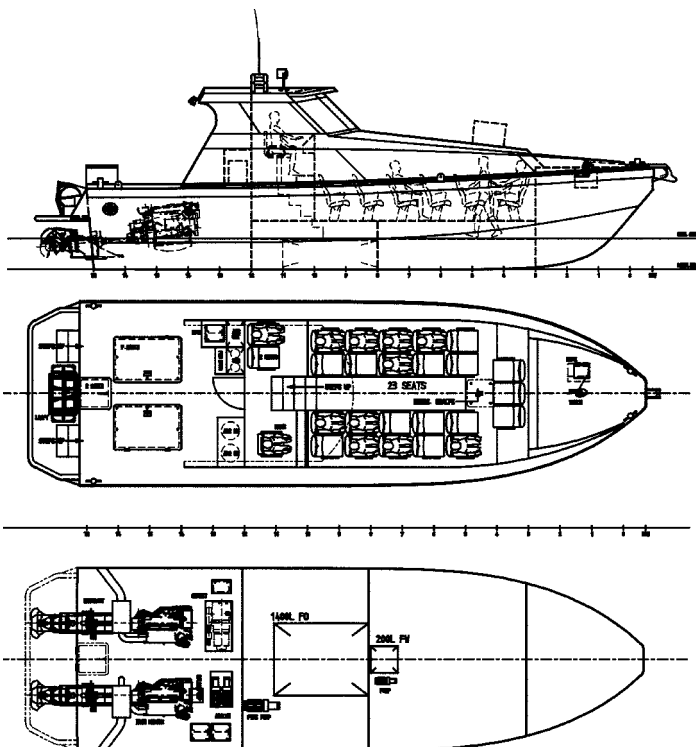


OFFSHORE 14 WJ

14 metre Crew Transfer Vessel

MAHAKAM CLASS

3 VESSELS CONSTRUCTED



SPECIFICATIONS

Length Overall:	13.10 metres
Beam Moulded:	4.30 metres
Draft:	0.75 metres
Propulsion Power:	2 x 370 BHP
Speed:	23 knots
Fuel Capacity:	1,200 litres
Fresh Water Capacity:	200 litres
Compliment:	2
Rig Crew:	24

sales@strategicmarine.com

www.strategicmarine.com

AUSTRALIA



Lot 5 Clarence Beach Road,
Henderson, WA,
Australia, 6166

T: +61 (8) 9437 4840
F: +61 (8) 9437 4838

SINGAPORE



Number 04 Pioneer Sector 1
Singapore, 624816

T: +65 6558 7877
F: +65 6558 7277

VIETNAM



12 Dong Xuyen Industrial Zone,
Vung Tau City,
Vietnam

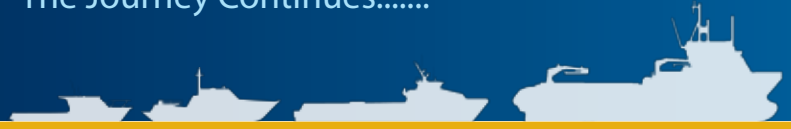
T: +84 64 615 225
F: +84 64 615 228

MEXICO



Estero De Urias S/N, Mazatlán,
Sinaloa,
Mexico, 82099

T: +52 669 9911295
F: +52 669 9911299

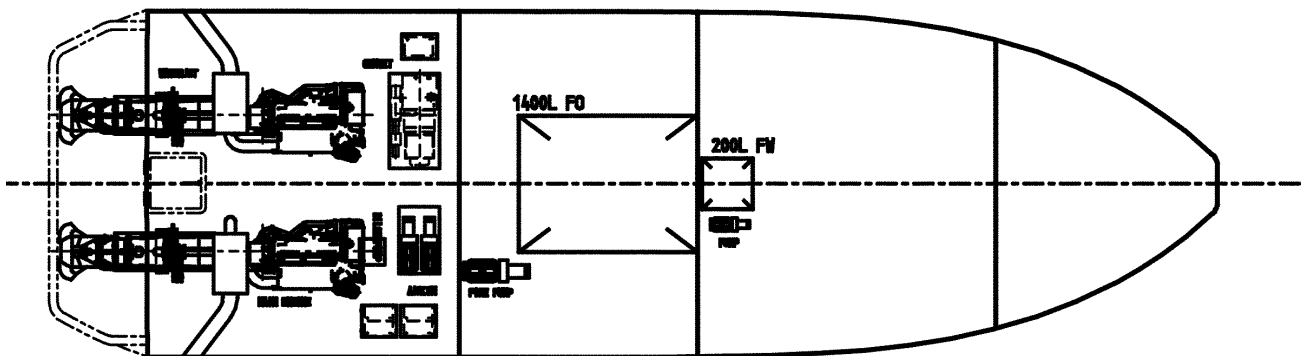
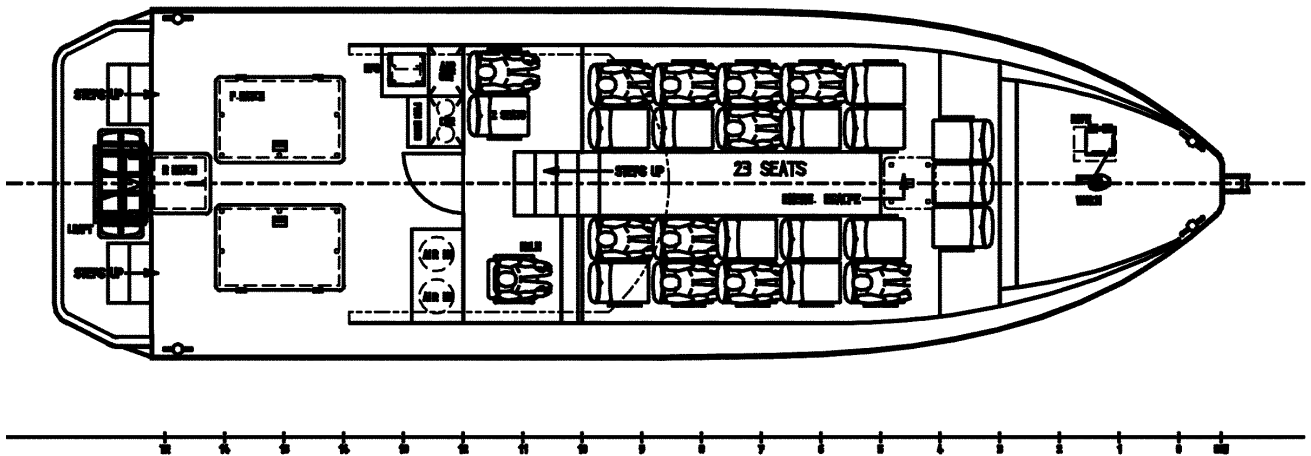
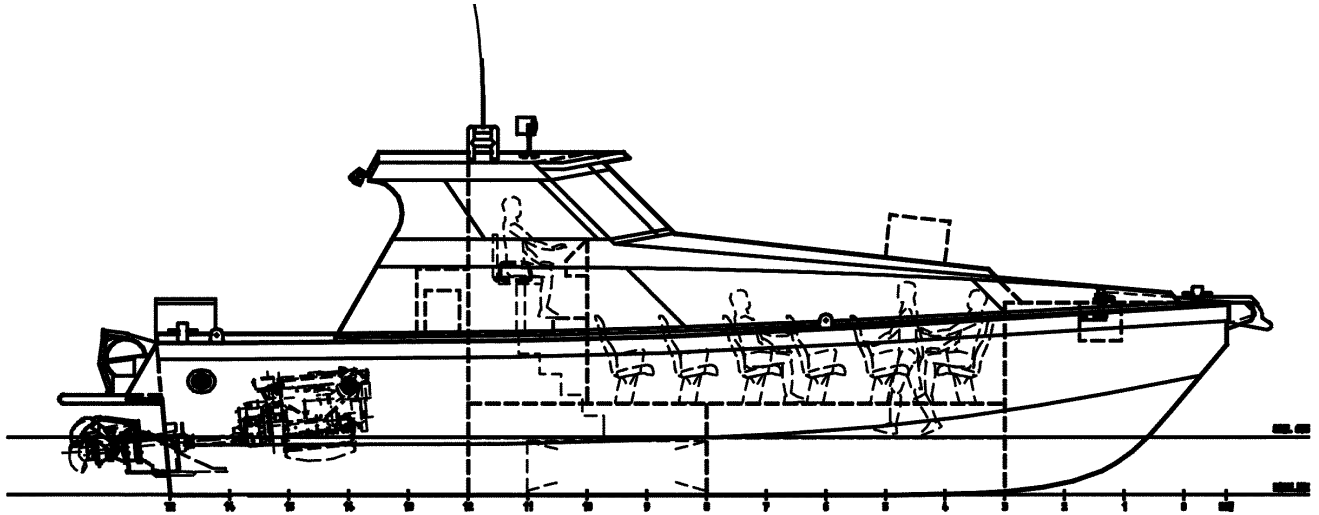


OFFSHORE 14 WJ

General Arrangement Drawing

MAHAKAM CLASS

3 VESSELS CONSTRUCTED



sales@strategicmarine.com

www.strategicmarine.com

AUSTRALIA



Lot 5 Clarence Beach Road,
Henderson, WA,
Australia, 6166

T: +61 (8) 9437 4840
F: +61 (8) 9437 4838

SINGAPORE



Number 04 Pioneer Sector 1
Singapore, 624816

T: +65 6558 7877
F: +65 6558 7277

VIETNAM



12 Dong Xuyen Industrial Zone,
Vung Tau City,
Vietnam

T: +84 64 615 225
F: +84 64 615 228

MEXICO



Estero De Urias S/N, Mazatlán,
Sinaloa,
Mexico, 82099

T: +52 669 9911295
F: +52 669 9911299