

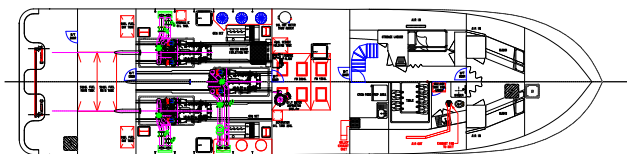
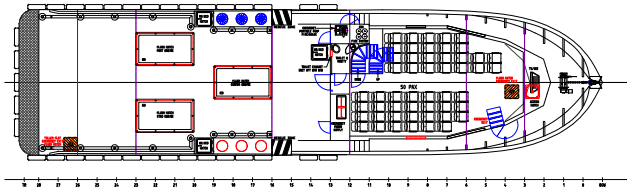
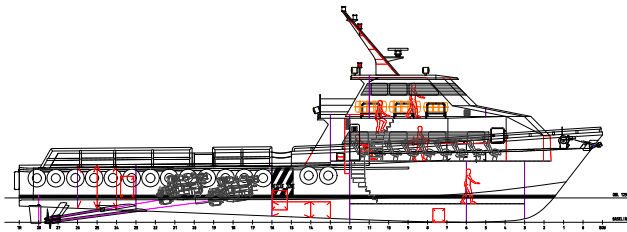
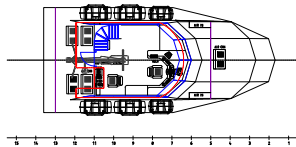


OFFSHORE 30 FPP

30 metre Crewboat

KALTIM CLASS

3 VESSELS CONSTRUCTED



SPECIFICATIONS

Length Overall:	29.80 metres
Beam Moulded:	7.50 metres
Draft:	2.22 metres
Propulsion Power:	2800 BHP
Speed:	23 knots
Fuel Capacity:	12,000 litres
Fresh Water Capacity:	5,000 litres
Compliment:	6
Rig Crew:	50
Deck Area:	85 m ²

sales@strategicmarine.com

www.strategicmarine.com

AUSTRALIA



Lot 5 Clarence Beach Road,
Henderson, WA,
Australia, 6166

T: +61 (8) 9437 4840
F: +61 (8) 9437 4838

SINGAPORE



Number 04 Pioneer Sector 1
Singapore, 624816

T: +65 6558 7877
F: +65 6558 7277

VIETNAM



12 Dong Xuyen Industrial Zone,
Vung Tau City,
Vietnam

T: +84 64 615 225
F: +84 64 615 228

MEXICO



Estero De Urias S/N, Mazatlán,
Sinaloa,
Mexico, 82099

T: +52 669 9847879
F: +52 669 984 7522

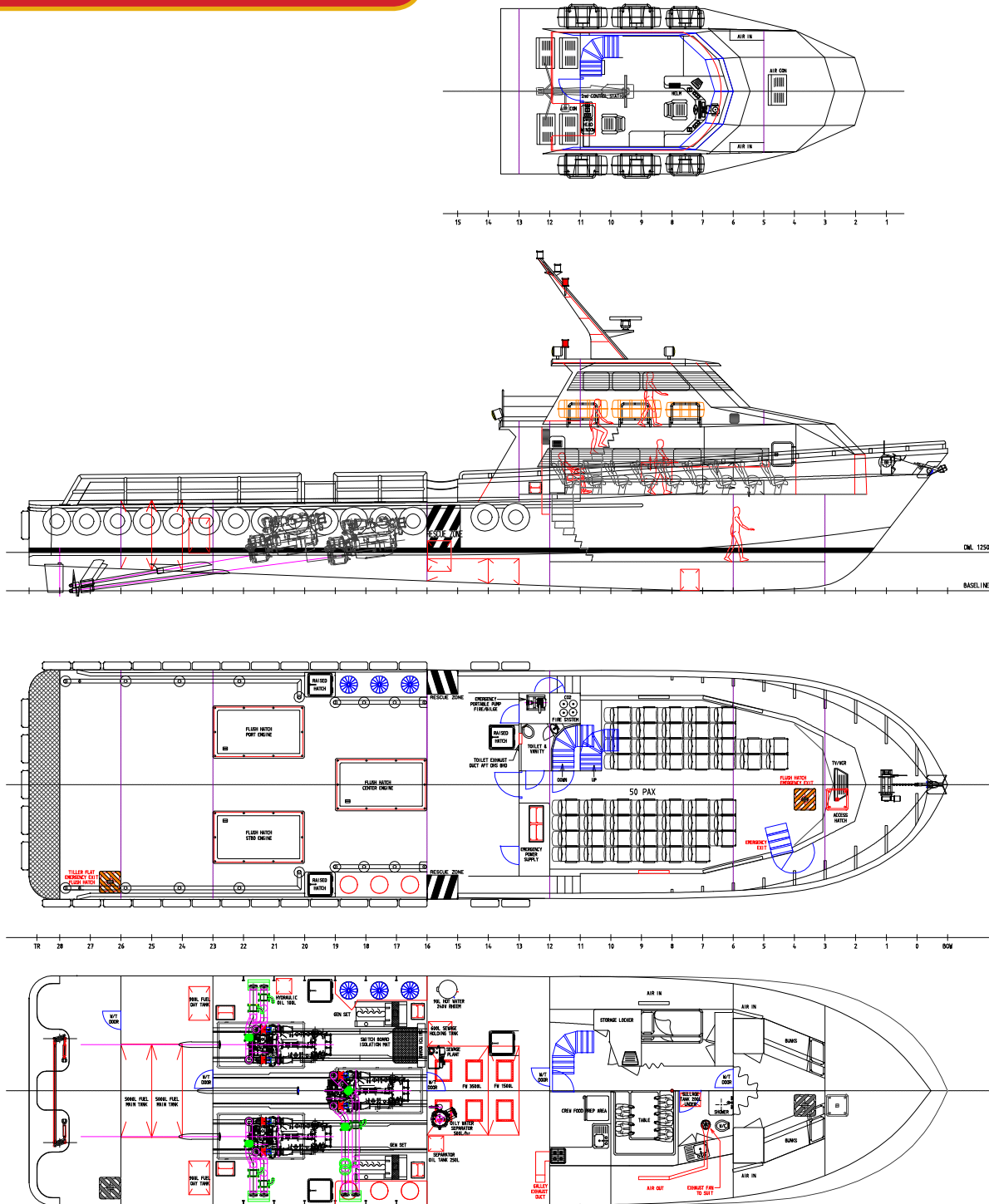


OFFSHORE 30 FPP

General Arrangement Drawing

KALTIM CLASS

3 VESSELS CONSTRUCTED



DM. 1250
BASELINE

sales@strategicmarine.com

www.strategicmarine.com

AUSTRALIA



Lot 5 Clarence Beach Road,
Henderson, WA,
Australia, 6166

T: +61 (8) 9437 4840
F: +61 (8) 9437 4838

SINGAPORE



Number 04 Pioneer Sector 1
Singapore, 624816

T: +65 6558 7877
F: +65 6558 7277

VIETNAM



12 Dong Xuyen Industrial Zone,
Vung Tau City,
Vietnam

T: +84 64 615 225
F: +84 64 615 228

MEXICO



Estero De Urias S/N, Mazatlán,
Sinaloa,
Mexico, 82099

T: +52 669 9847879
F: +52 669 984 7522