



Strategic Marine Maritime Solutions



MAIN PARTICULARS

LENGTH OVERALL	20.70 m
DRAFT	1.00 m
BEAM	5.80 m
DEPTH	2.50 m
CLASS	LR
NOTATION	Special Service Craft

CAPACITIES

FRESH WATER	2,000 l
FUEL OIL	6,300 l

CARGO DECK

CARGO CAPACITY	35 t
----------------	------

MACHINERY

NUMBER OF MAIN ENGINES (WING)	2
MAIN ENGINE MAKE (WING)	MTU
MAIN ENGINE MODEL (WING)	16V2000 M90
MAIN ENGINE RATING (WING)	1340Kw @ 2450 rpm
GEAR BOX MAKE (WING)	ZF
GEAR BOX MODEL (WING)	BW 250
NUMBER OF GENERATORS	2
MAIN GENERATORS	Yanmar 4TNE 98 - GIA
PROPULSION TYPE	Hamilton Waterjet HM 521

PERFORMANCE

SPEED	41.5 + Knots
LOAD CONDITIONS	100% MCR
FUEL CONSUMPTION	6921/hr

ACCOMMODATIONS

CREW QUARTERS	7
OTHER PERSONNEL	16

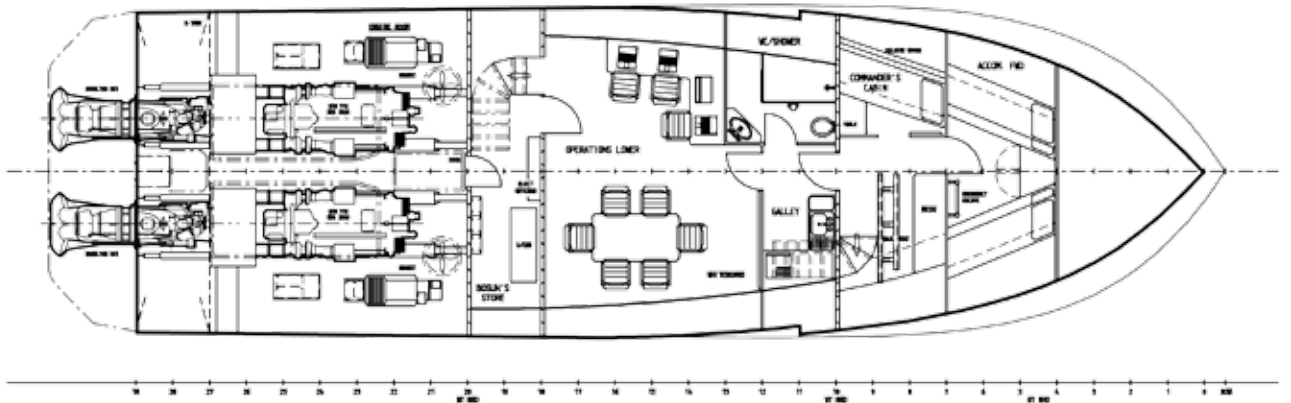
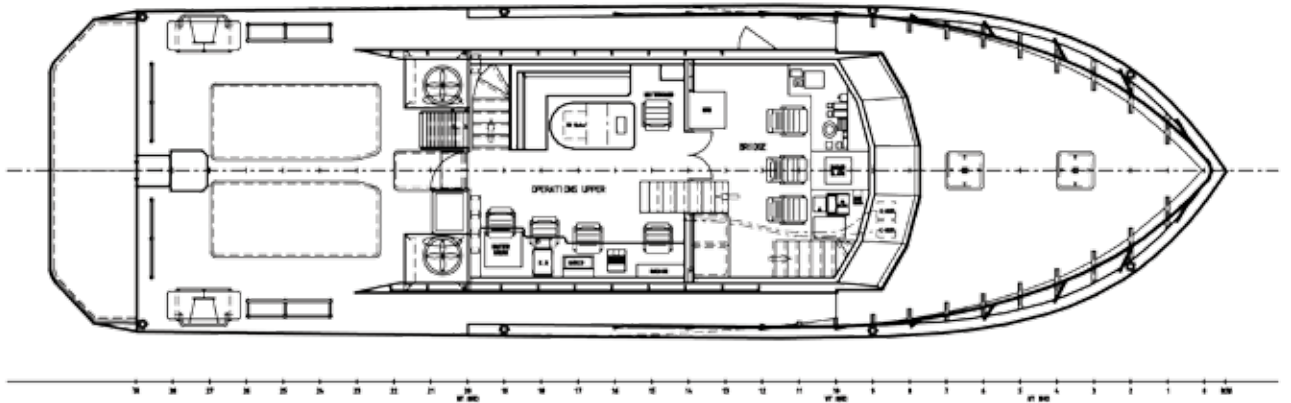
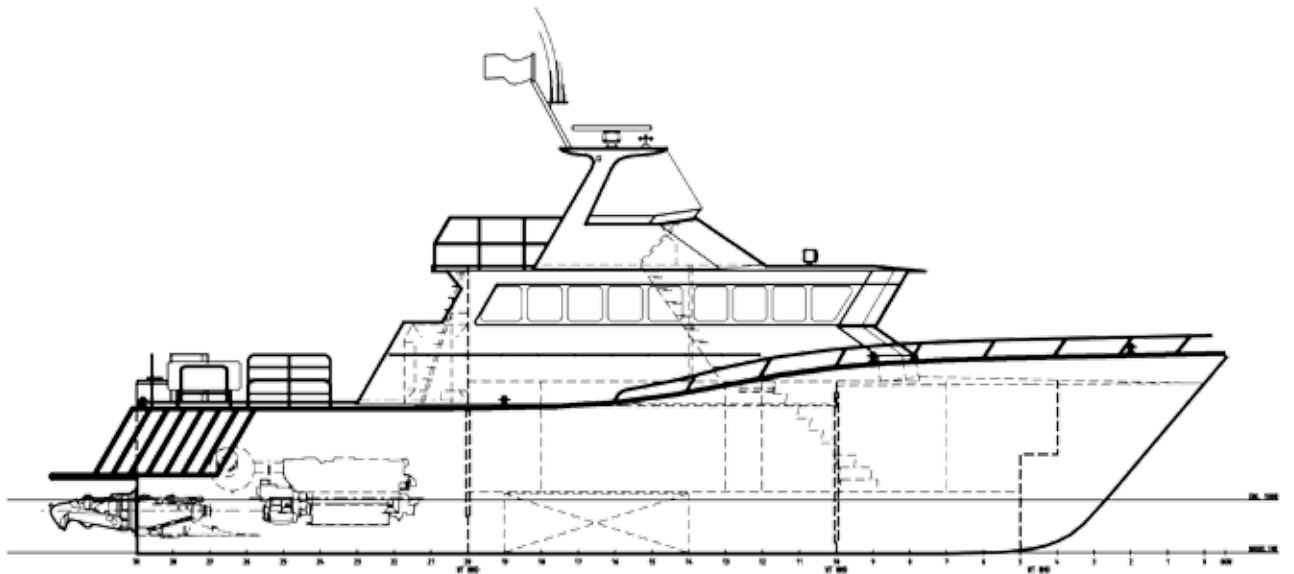
ELECTRONICS AND CONTROLS

RADAR	Kelvin Hughes Nucleus 2 6000
ECHO SOUNDER	CETREK
GPS	GFE
GMDSS VHF/DSC RADIOS	Sailor 2048 DSC
TALKBACK / PA SYSTEM	Steenans
GYRO COMPASS	ANSCHUTZ
NIGHT VISION DEVICE	GFE

20.00M STINGRAY VESSEL WJ



Strategic Marine Maritime Solutions



BUILDING FOR THE FUTURE

20.00M STINGRAY VESSEL WJ