



Strategic Marine Maritime Solutions



MAIN PARTICULARS

LENGTH OVERALL	22.1m
DRAFT	1.7m
BEAM	6.3m
DEPTH	2.22m
CLASS	BV
NOTATION	I, +HULL, +MACHINERY, (Lightship/Fast Crewboat) Coastal Area

CAPACITIES

FRESH WATER	1,000L
FUEL OIL	5,000L
SEWAGE TANK	500L
MACHINERY	
PROPULSION TYPE	Fixed Pitch Propeller
NUMBER OF MAIN ENGINES (WING)	2
MAIN ENGINE MAKE (WING)	MTU
MAIN ENGINE MODEL (WING)	10V2000M72
MAIN ENGINE RATING (WING)	1205 BHP @ 2250
GEAR BOX MAKE (WING)	ZF
GEAR BOX MODEL (WING)	3000A

NUMBER OF GENERATORS	2
MAIN GENERATORS	Perkins 45 kWe

PERFORMANCE

SPEED	25 KNOTS
LOAD CONDITIONS	8.50 DWT
ENGINE OUTPUT	85% MCR
ENDURANCE	4 hour at 85% MCR

ACCOMODATIONS

CREW QUARTERS	4
PASSENGER SEATING	30

ELECTRONICS AND CONTROLS

RADAR (IMO APPROVED)	Furuno FR-1500 mk3
ECHO SOUNDER	Furuno FCV-620
GPS	Furuno GP-32
SATELLITE COMPASS	Marport "Compasspoint" 2200
AUTO PILOT	Navicontrol AP-3003 "Gold"
GMDSS MF/HF SSB RADIO ANTENNA	Furuno FS-1570 2 x Shakespeare 393
GMDSS VHF RADIOS	2 units Furuno FM 8800S
NAVTEX RECEIVER	Furuno NX-500
GMDSS EPIRB	GME Model 401FF
GMDSS SART	McMurdo SART
GMDSS 2 WAY HAND HELD VHF RADIO	2 x McMurdo VHF / Walkie Talkie
PA SYSTEM TALKBACK SYS- TEM	Raymarine C430
TV ANTENNA	Marine omni directional antenna
SEARCH LIGHTS	2 units 1000W Search- lights
RUDDER ANGLE INDICATOR	Marsili
HORN	Marco Pneumatic
MAGNETIC COMPASS	5" SILVA
AIS SYSTEM	McMurdo M2 AIS System

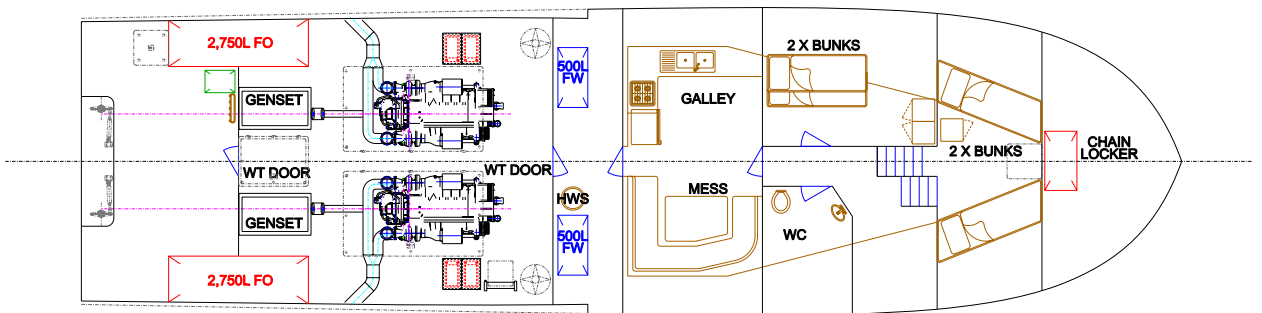
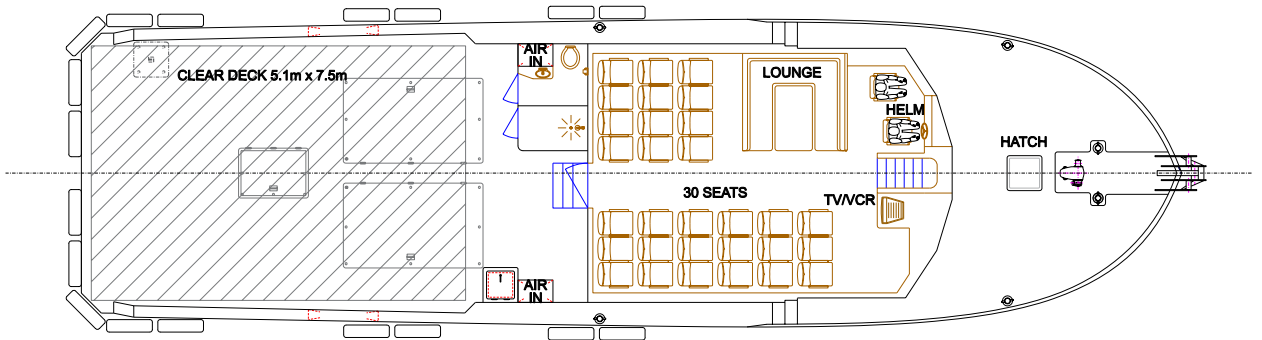
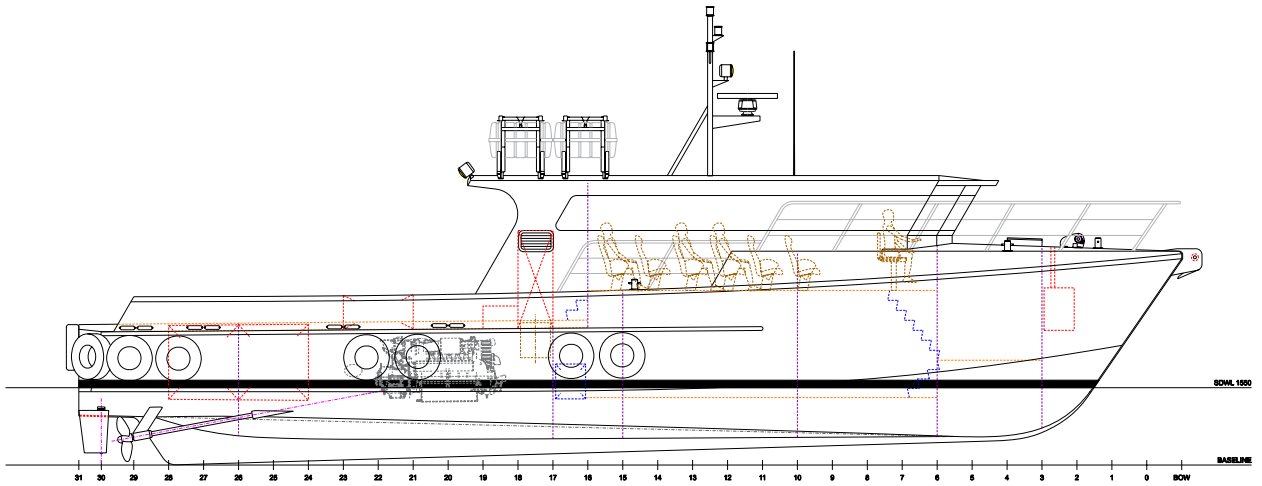
22.00M OFFSHORE UTILITY VESSEL



Strategic Marine Maritime Solutions



22.00M OFFSHORE UTILITY VESSEL



BUILDING FOR THE FUTURE